

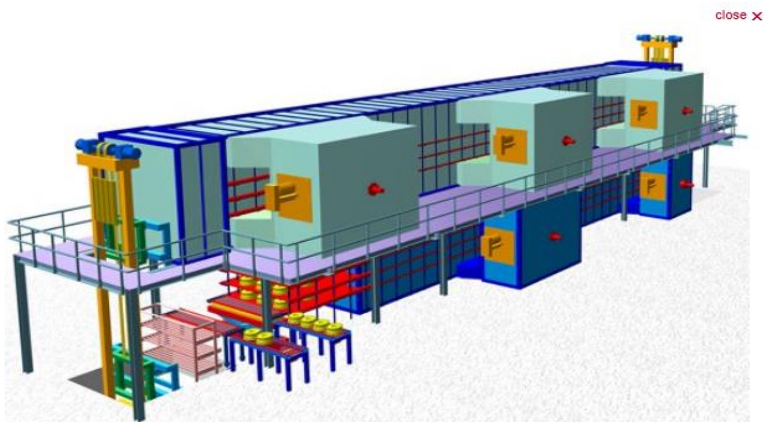
## 车辋热处理整线设备 Car Alloy Wheel Heat Treatment Production Line



功能叙述	
加热方式	<ul style="list-style-type: none"> <li>☞ 电加热 (热风循环)</li> <li>☞ 燃气加热</li> </ul>
优点	<ul style="list-style-type: none"> <li>☞ 均温度优良 (<math>\pm 5^{\circ}\text{C}</math>)</li> <li>☞ 在加热室能自动控温和显示氧含量</li> <li>☞ 可依客户需求, 提供炉内不同的充入气体和环境</li> <li>☞ 特殊保温节省能源消耗</li> <li>☞ 提供高纯度的气体环境, 并减少气体消耗</li> </ul>
使用于	<ul style="list-style-type: none"> <li>☞ 还原</li> <li>☞ 段烧/焙烧</li> <li>☞ 烧结</li> <li>☞ 涂料</li> </ul>



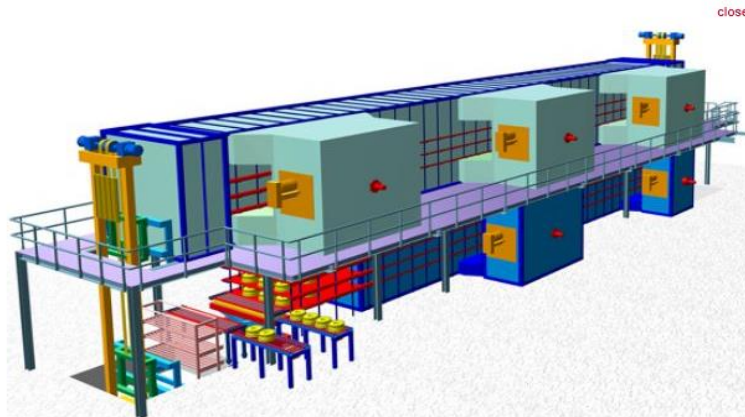
型号	尺寸(mm) (W×L×H)	温度范围 ( $^{\circ}\text{C}$ )
EF-01	500×500×500	100~1200
EF-02	800×800×800	100~1200
EF-03	1000×1000×1000	100~1200
EF-04	1500×1500×1500	100~1200
EF-05	2000×2000×2000	100~1200
EF-C	依照需求客制化尺寸	100~1200



3D roller plants on top of each other



## 车轂热处理整线设备 Car Alloy Wheel Heat Treatment Production Line



3D roller plants on top of each other

Description	Aluminum alloys which can be age-hardened are
Heating Method	<ul style="list-style-type: none"> <li>☞ Electric Heating (convection)</li> <li>☞ Gas Heating</li> </ul>
Temperature Range	<ul style="list-style-type: none"> <li>☞ Solution Annealing: 535°C</li> <li>☞ Quenching Tank: 80°C</li> <li>☞ Aging: 140 ~200°C</li> </ul>
Advantage	<ul style="list-style-type: none"> <li>☞ Temperature Uniformity (±5°C)</li> <li>☞ Automatic temperature control and oxygen content in the chamber</li> <li>☞ Accommodate reactive or insert gas atmospheres upon customer's request</li> <li>☞ Energy efficient design insulation</li> <li>☞ Ultra-pure atmospheric environment with minimal gas consumption</li> <li>☞ 均温度优良 (±5°C)</li> <li>☞ 在加热室能自动控温和显示氧含量</li> <li>☞ 可依客户需求, 提供炉内不同的充入气体和环境</li> <li>☞ 特殊保温节省能源消耗</li> <li>☞ 提供高纯度的气体环境, 并减少气体消耗</li> </ul>
Application	<ul style="list-style-type: none"> <li>☞ 还原</li> <li>☞ 段烧/焙烧</li> <li>☞ 烧结</li> <li>☞ 涂料</li> </ul>

Type	尺寸(mm) (W×L×H)	温度范围 (°C)
EF-01	500×500×500	100~1200
EF-02	800×800×800	100~1200
EF-03	1000×1000×1000	100~1200
EF-04	1500×1500×1500	100~1200
EF-05	2000×2000×2000	100~1200
EF-C	依照需求客制化尺寸	100~1200